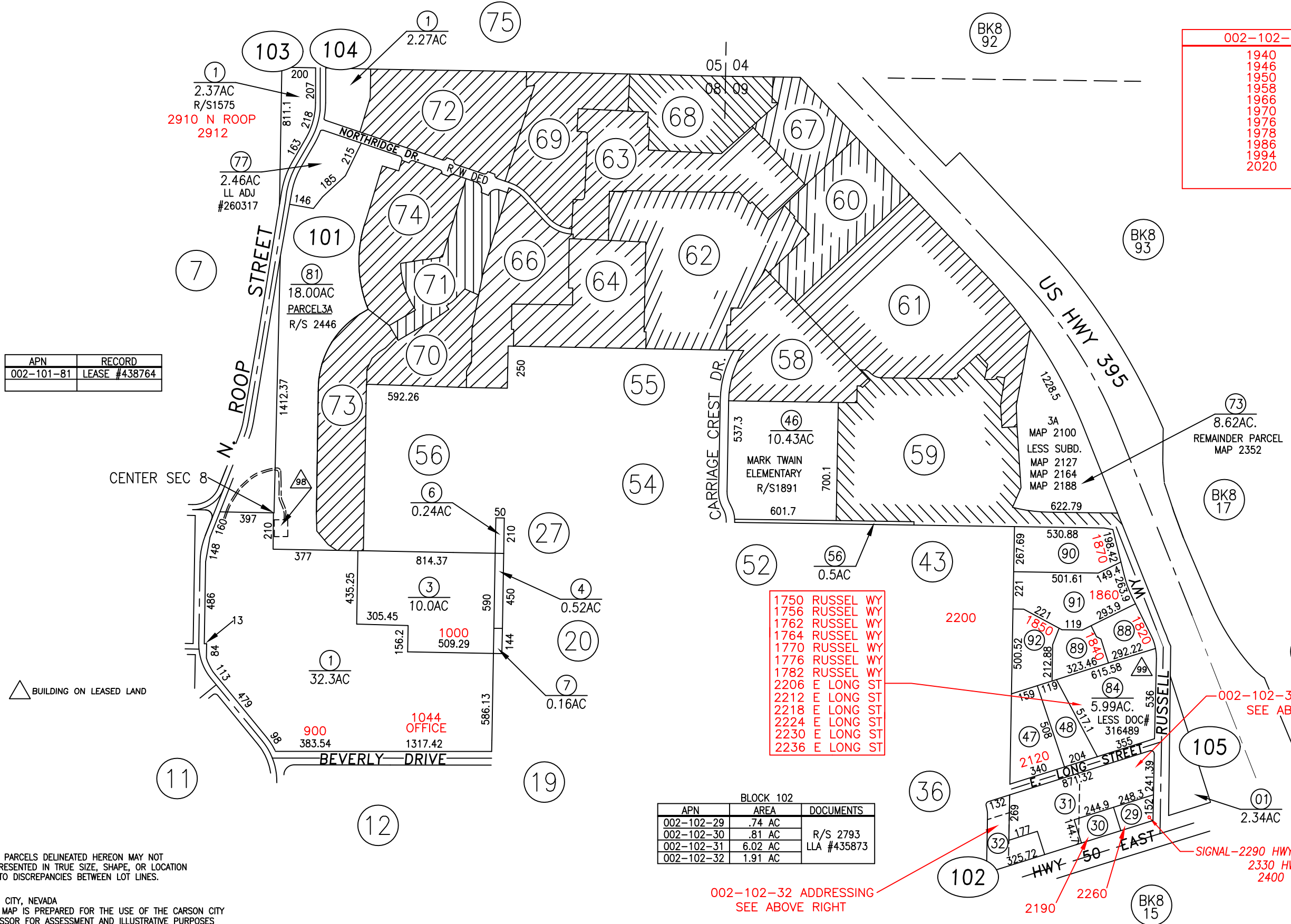


PORTION SECTIONS 8 & 9  
T.15 N., R.20 E., M.D.B. & M.



APN	RECORD
002-101-81	LEASE #438764

002-102-32	002-102-31		
1940	2010	2182	2244
1946	2020	2188	2254
1950	2040	2200	2264
1958	2060	2202	2268
1966	2070	2206	2270
1970	2080	2212	2290
1976	2100	2214	
1978	2110	2220	
1986	2158	2226	
1994	2164	2228	
2020	2170	2230	
	2176	2238	

APN 00210501 ADDRESSES	
2300	HWY 50 E
2330	S/CHG HWY 50 E
2330	-2360 HWY 50 E
2400	HWY 50 E
2408	HWY 50 E
2416	HWY 50 E
2416	S/CHG HWY 50 E
2422	ELEC HWY 50 E
2430	HWY 50 E
2440	HWY 50 F
2444	HWY 50 F
2446	HWY 50 F
2448	HWY 50 F
2452	SPLR HWY 50 E
2456	HWY 50 E
2468	HWY 50 E
2474	HWY 50 E
2482	HWY 50 E
2488	HWY 50 E
2496	HWY 50 E

BLOCK 101		
APN	AREA	DOCUMENTS
002-101-47	2.92 AC	1 PM 1169
002-101-48	1.89 AC	2 PM 1169
002-101-88	1.77 AC	2 PM 2748
002-101-89	1.71 AC	1 PM 2748
002-101-90	3.67 AC	A PM 2835
002-101-91	4.55 AC	B PM 2835
002-101-92	2.39 AC	C PM 2835

BLOCK 105		
APN	ADDRESS	
002-105-88	1800 RUSSELL WY	
002-105-89	1820 RUSSELL WY	

- 1750 RUSSEL WY
- 1756 RUSSEL WY
- 1762 RUSSEL WY
- 1764 RUSSEL WY
- 1770 RUSSEL WY
- 1776 RUSSEL WY
- 1782 RUSSEL WY
- 2206 E LONG ST
- 2212 E LONG ST
- 2218 E LONG ST
- 2224 E LONG ST
- 2230 E LONG ST
- 2236 E LONG ST

BLOCK 102		
APN	AREA	DOCUMENTS
002-102-29	.74 AC	
002-102-30	.81 AC	R/S 2793
002-102-31	6.02 AC	LLA #435873
002-102-32	1.91 AC	

002-102-31 ADDRESSES  
SEE ABOVE RIGHT

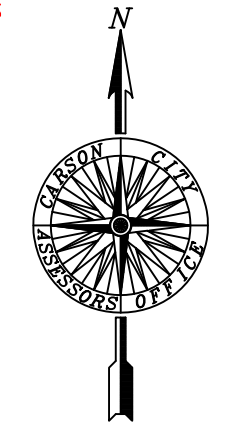
002-102-32 ADDRESSING  
SEE ABOVE RIGHT

SIGNAL-2290 HWY 50 E  
2330 HWY 50 E  
2400 HWY 50 E

UPDATED PAGE & LEASED PARCEL 98 LOCATION

NOTE  
SOME PARCELS DELINEATED HEREON MAY NOT BE PRESENTED IN TRUE SIZE, SHAPE, OR LOCATION DUE TO DISCREPANCIES BETWEEN LOT LINES.

CARSON CITY, NEVADA  
THIS MAP IS PREPARED FOR THE USE OF THE CARSON CITY ASSESSOR FOR ASSESSMENT AND ILLUSTRATIVE PURPOSES ONLY, IT DOES NOT REPRESENT A SURVEY. NO LIABILITY IS ASSUMED AS TO THE SUFFICIENCY OR ACCURACY OF THE DATA DELINEATED HEREON. YOU CAN VIEW AND PRINT OUR MAPS AT NO CHARGE FROM OUR WEBSITE AT: <http://ccapps.org/publicgis/>



SCALE: 1" = 600'  
REVISED: 10/20/2017