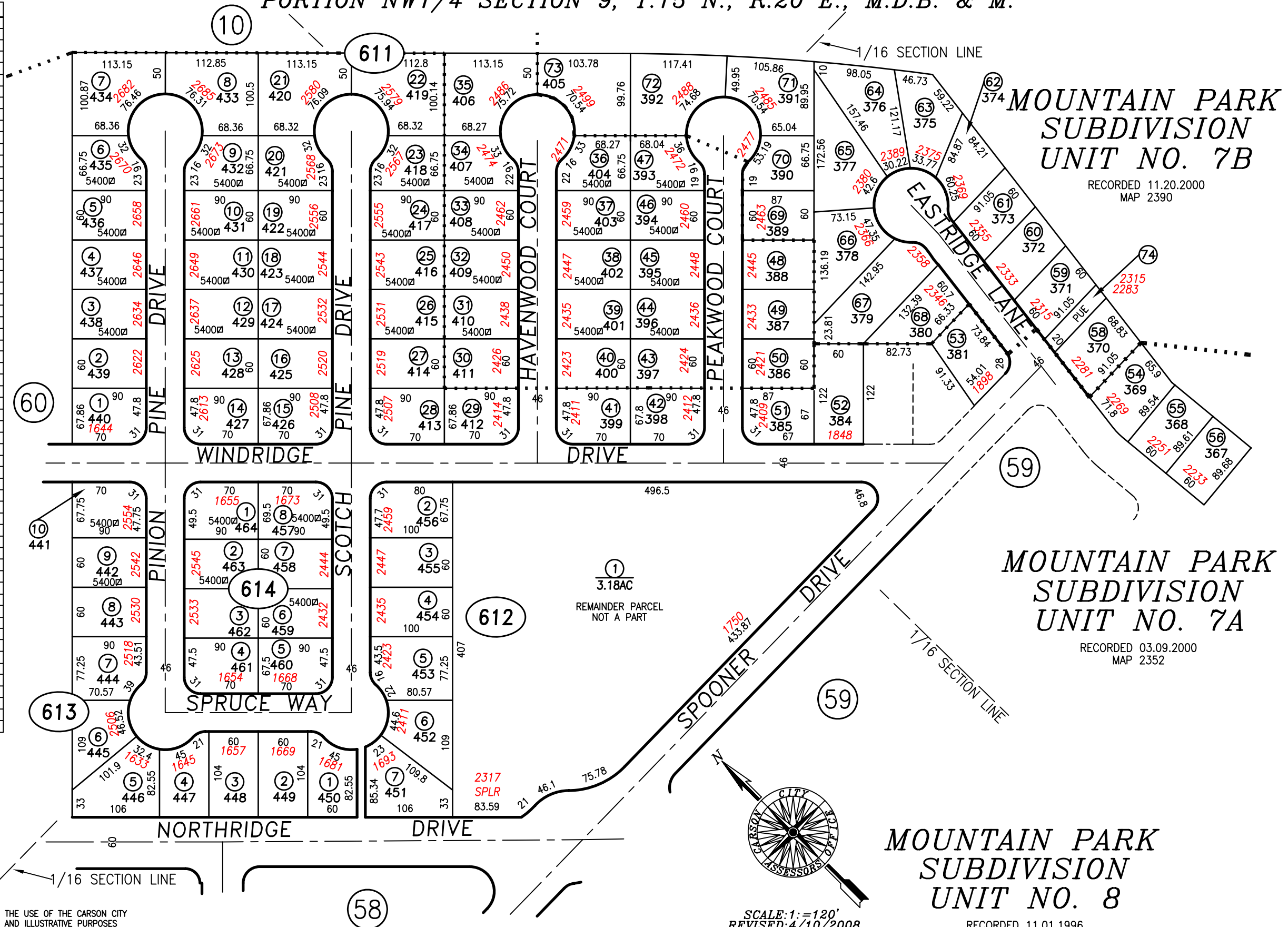


PORTION NW1/4 SECTION 9, T.15 N., R.20 E., M.D.B. & M.

APN:	AREA IN SF:
2-611-01	6,022
-06	5,516
-07	9,548
-08	9,516
-09	5,516
-14	6,022
-15	6,022
-20	5,508
-21	9,523
-22	9,491
-23	5,508
-28	6,022
-29	6,022
-34	5,500
-35	9,498
-36	5,500
-41	6,022
-42	6,022
-47	5,434
-48	5,220
-49	5,220
-50	5,220
-51	5,818
-52	7,320
-53	6,126
-54	6,195
-55	5,375
-56	5,379
-58	6,195
-59	5,463
-60	5,463
-61	5,463
-62	5,403
-63	6,747
-64	8,567
-65	8,887
-66	7,937
-67	9,296
-68	5,964
-69	5,220
-70	5,234
-71	8,482
-72	9,641
-73	9,466
2-612-02	6,689
-03	6,000
-04	6,000
-05	7,426
-06	6,303
-07	7,498
2-613-01	5,472
-02	6,240
-03	6,240
-04	5,472
-05	7,577
-06	5,641
-07	6,654
-10	6,012
2-614-01	6,169
-04	5,989
-05	5,989
-08	6,169



**MOUNTAIN PARK
SUBDIVISION
UNIT NO. 7B**

RECORDED 11.20.2000
MAP 2390

**MOUNTAIN PARK
SUBDIVISION
UNIT NO. 7A**

RECORDED 03.09.2000
MAP 2352

**MOUNTAIN PARK
SUBDIVISION
UNIT NO. 8**

RECORDED 11.01.1996

SCALE: 1" = 120'
REVISED: 4/10/2008

STANDARDIZED PAGE CARSON CITY, NEVADA
THIS MAP IS PREPARED FOR THE USE OF THE CARSON CITY
ASSESSOR FOR ASSESSMENT AND ILLUSTRATIVE PURPOSES
ONLY, IT DOES NOT REPRESENT A SURVEY. NO LIABILITY
IS ASSUMED AS TO THE SUFFICIENCY OR ACCURACY OF THE
DATA DELINEATED HEREON. YOU CAN VIEW AND PRINT OUR
MAPS AT NO CHARGE FROM OUR WEBSITE AT
WWW.CARSON-CITY.NV.US