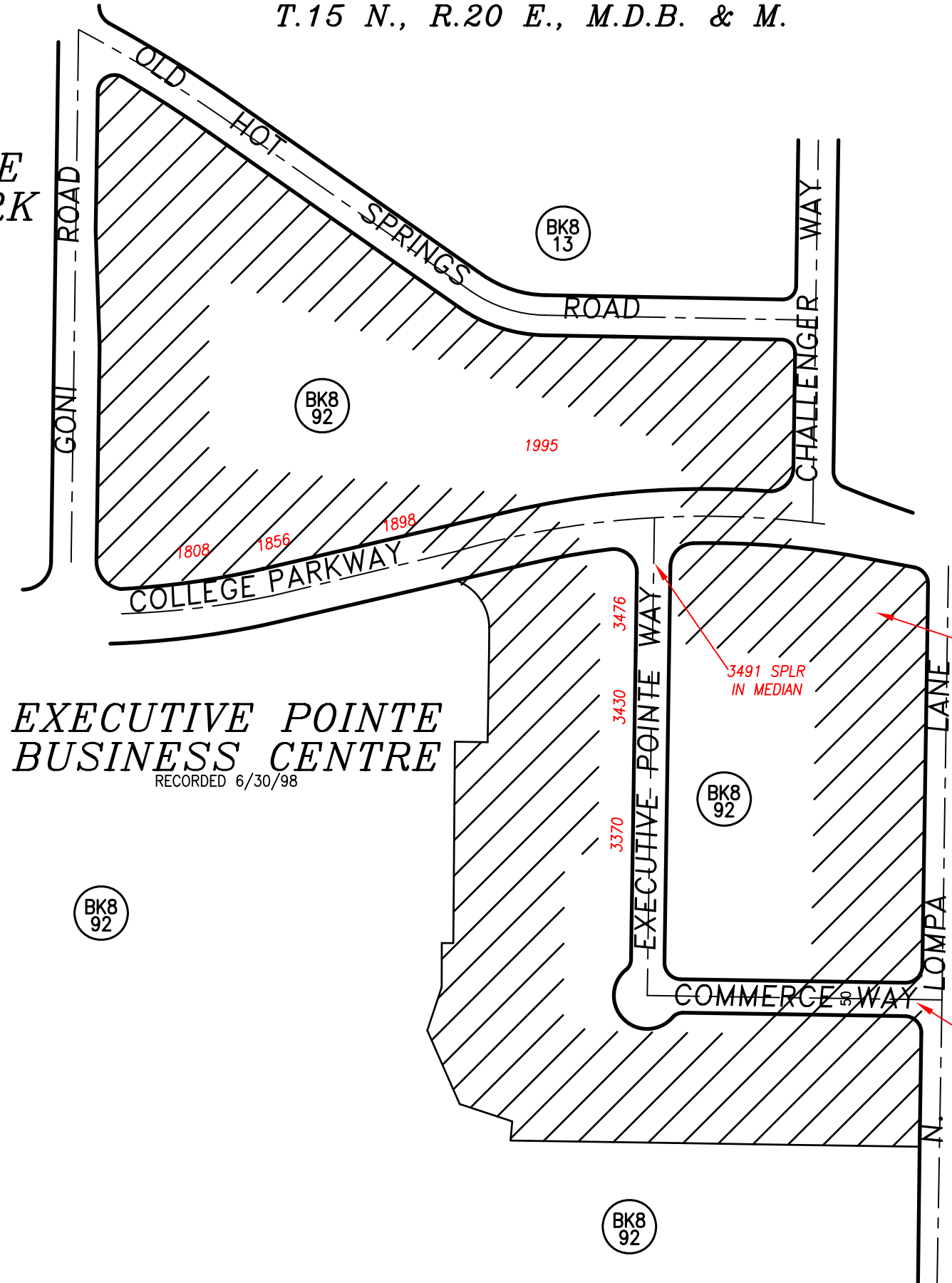


PORTION SECTION 4,
T.15 N., R.20 E., M.D.B. & M.

**NORTH POINTE
BUSINESS PARK**
RECORDED 3/2/99



APN CHANGES FOR THE 2006/2007 TAX YEAR	
OLD PARCEL	NEW PARCEL
002-651-01	008-924-01
002-652-01	008-922-16
002-652-02	008-922-17
002-652-03	008-922-18
002-652-04	008-922-19
002-652-05	008-922-20
002-652-06	008-922-21
002-652-07	008-922-22
002-653-01	008-921-04
002-653-04	008-921-01
002-653-06	008-921-02
002-653-07	008-921-03
002-653-09	008-921-09
002-653-10	008-921-10
002-653-12	008-921-05
002-653-13	008-921-06
002-653-12	008-921-05
002-653-13	008-921-06

NOTE
SOME PARCELS DELINEATED HEREON MAY NOT
BE PRESENTED IN TRUE SIZE, SHAPE, OR LOCATION
DUE TO DISCREPANCIES BETWEEN LOT LINES.

STANDARDIZED PAGE.
CARSON CITY, NEVADA
THIS MAP IS PREPARED FOR THE USE OF THE CARSON CITY
ASSESSOR FOR ASSESSMENT AND ILLUSTRATIVE PURPOSES
ONLY, IT DOES NOT REPRESENT A SURVEY. NO LIABILITY
IS ASSUMED AS TO THE SUFFICIENCY OR ACCURACY OF THE
DATA DELINEATED HEREON. YOU CAN VIEW AND PRINT OUR
MAPS AT NO CHARGE FROM OUR WEBSITE AT
WWW.CARSON-CITY.NV.US

