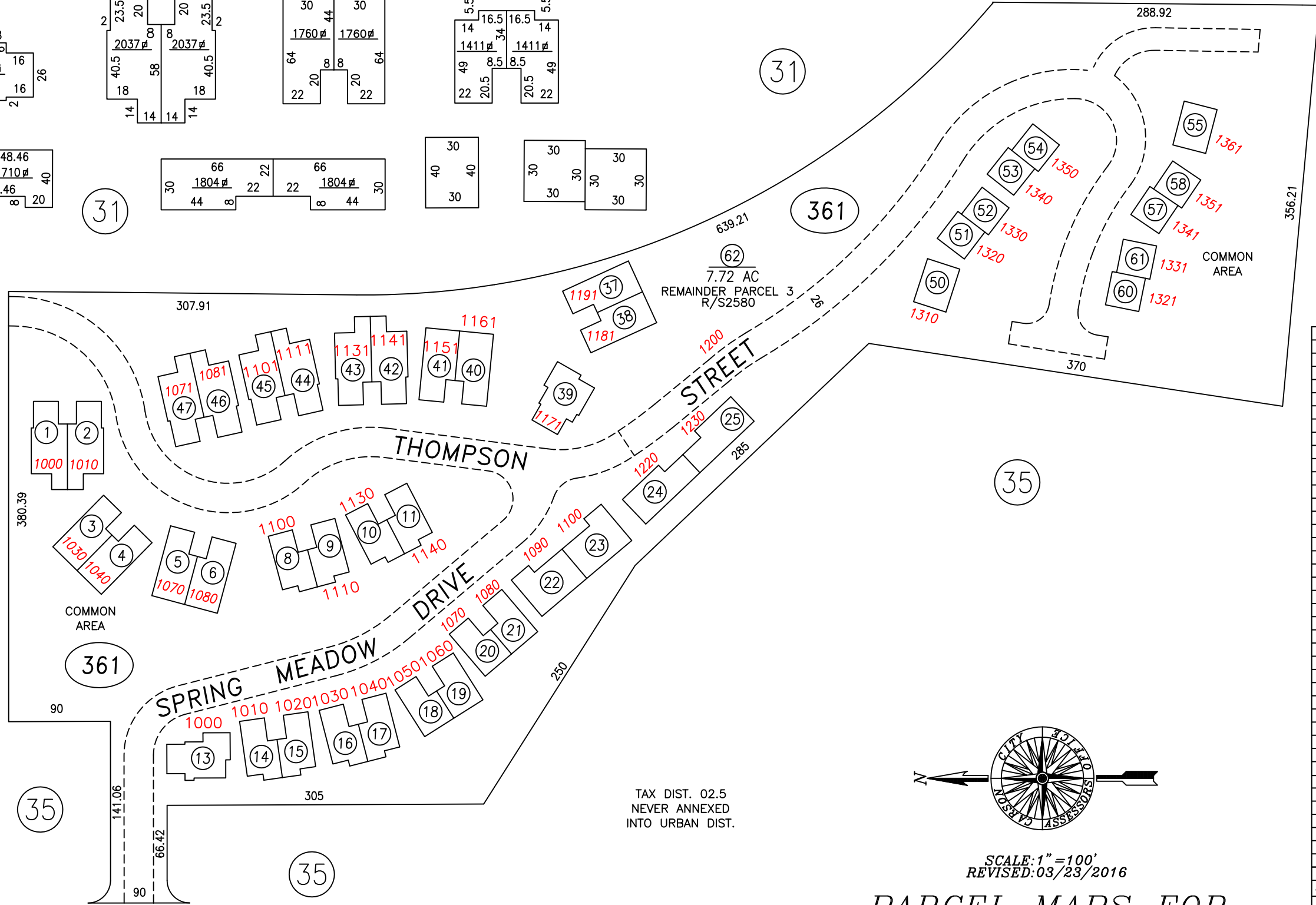
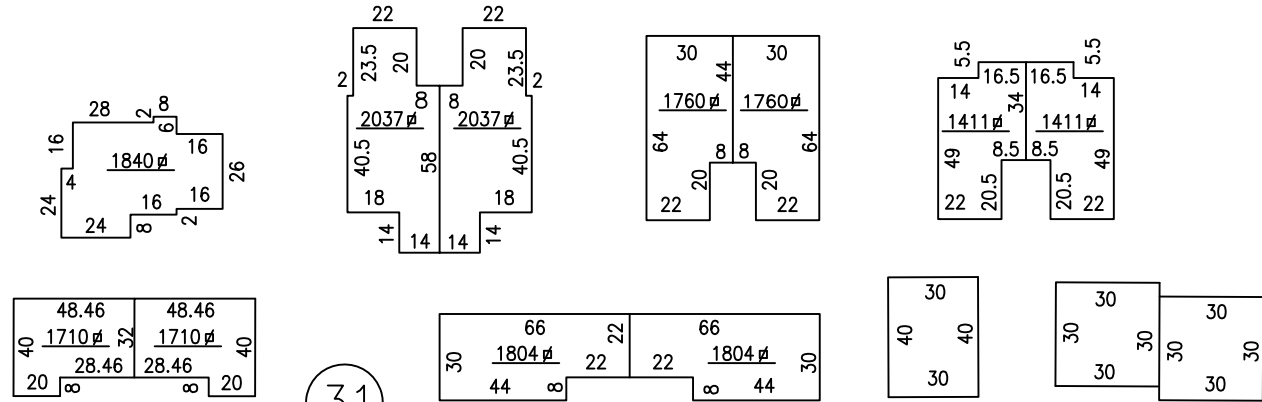


# TYPICAL BUILDING DETAILS

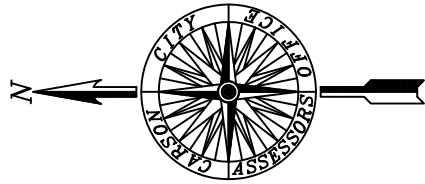
PORTION NE1/4 SW1/4 SECTION 19  
T.15 N., R.20 E., M.D.B. & M.

6



APN	PARCEL	MAP #
-01	1	1613
-02	2	1613
-03	3	1604
-04	2	1604
-05	1	1604
-06	3	1613
-08	1	1605
-09	2	1605
-10	1	1614
-11	2	1614
-13	1	1606
-14	1	1615
-15	2	1615
-16	3	1615
-17	1	1617
-18	2	1617 & 2428
-19	3	1617 & 2428
-20	1	1628 & 2428
-21	2	1628 & 2428
-22	3	1628 & 2428
-23	1	1632
-24	2	1606
-25	3	1606
-37	2	1629
-38	1	1629
-39	3	1618
-40	2	1618
-41	1	1618
-42	3	1616
-43	2	1616
-44	1	1616
-45	3	1607
-46	2	1607
-47	1	1607
-50	A-1	2511
-51	B-1	2511
-52	C-1	2511
-53	D-1	2511
-54	E-1	2511
-55	F-1	2511
-57	1	2579
-58	2	2579
-60	1	2580
-61	2	2580

TAX DIST. 02.5  
NEVER ANNEXED  
INTO URBAN DIST.



SCALE: 1" = 100'  
REVISED: 03/23/2016  
**PARCEL MAPS FOR  
SPRING MEADOW INC.**  
RECORDED 7/1988 - 11/2005

ADJ LOT LINES TO PARCELS 003-361-18,19,20,21 & 22 LLA #280004 MAP#2428

CARSON CITY, NEVADA  
THIS MAP IS PREPARED FOR THE USE OF THE CARSON CITY ASSESSOR FOR ASSESSMENT AND ILLUSTRATIVE PURPOSES ONLY. IT DOES NOT REPRESENT A SURVEY. NO LIABILITY IS ASSUMED AS TO THE SUFFICIENCY OR ACCURACY OF THE DATA DELINEATED HEREON. YOU CAN VIEW AND PRINT OUR MAPS AT NO CHARGE FROM OUR WEBSITE AT: <http://ccapps.org/publicgis/>