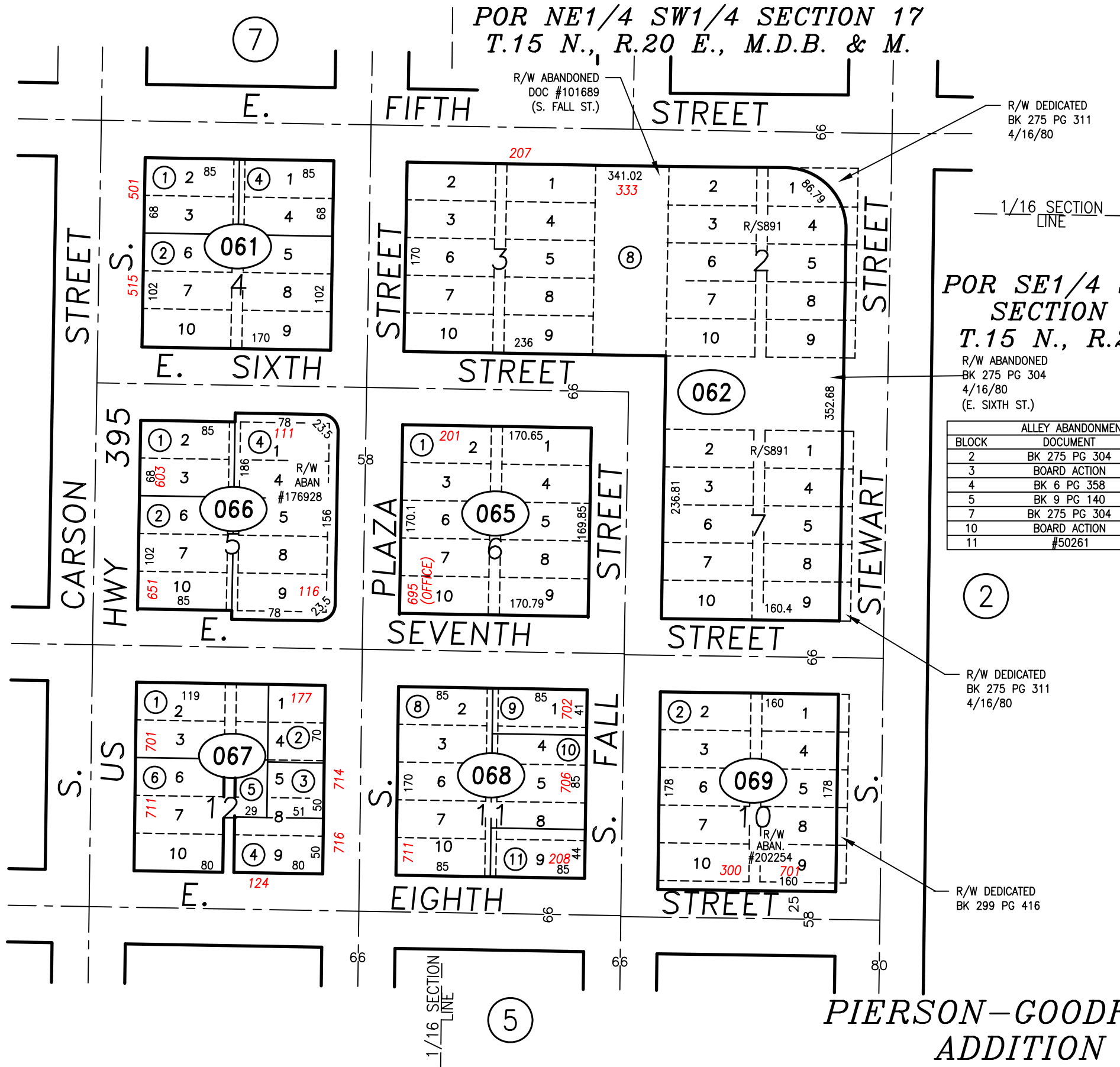


POR NW1/4 SW1/4 SECTION 17
T.15 N., R.20 E.

POR SW1/4 SW1/4 SECTION 17
T.15 N., R.20 E.

POR NE1/4 SW1/4 SECTION 17
T.15 N., R.20 E., M.D.B. & M.

POR SE1/4 SW1/4 SECTION 17
T.15 N., R.20 E.



R/W DEDICATED
BK 275 PG 311
4/16/80

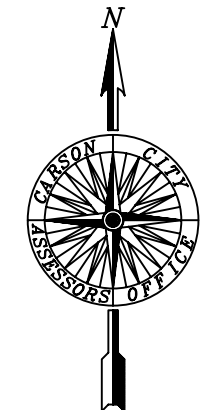
1/16 SECTION
LINE

R/W ABANDONED
BK 275 PG 304
4/16/80
(E. SIXTH ST.)

ALLEY ABANDONMENTS		
BLOCK	DOCUMENT	DATE
2	BK 275 PG 304	4/16/80
3	BOARD ACTION	8/11/67
4	BK 6 PG 358	2/11/36
5	BK 9 PG 140	
7	BK 275 PG 304	4/16/80
10	BOARD ACTION	5/13/29
11	#50261	10/6/86

R/W DEDICATED
BK 275 PG 311
4/16/80

R/W DEDICATED
BK 299 PG 416



SCALE: 1" = 100'
REVISED: 5/30/2008

PIERSON-GOODRIDGE
ADDITION

NOTE
SOME PARCELS DELINEATED HEREON MAY NOT
BE PRESENTED IN TRUE SIZE, SHAPE, OR LOCATION
DUE TO DISCREPANCIES BETWEEN LOT LINES.

STANDARDIZED PAGE
CARSON CITY, NEVADA
THIS MAP IS PREPARED FOR THE USE OF THE CARSON CITY
ASSESSOR FOR ASSESSMENT AND ILLUSTRATIVE PURPOSES
ONLY, IT DOES NOT REPRESENT A SURVEY. NO LIABILITY
IS ASSUMED AS TO THE SUFFICIENCY OR ACCURACY OF THE
DATA DELINEATED HEREON. YOU CAN VIEW AND PRINT OUR
MAPS AT NO CHARGE FROM OUR WEBSITE AT
WWW.CARSON-CITY.NV.US