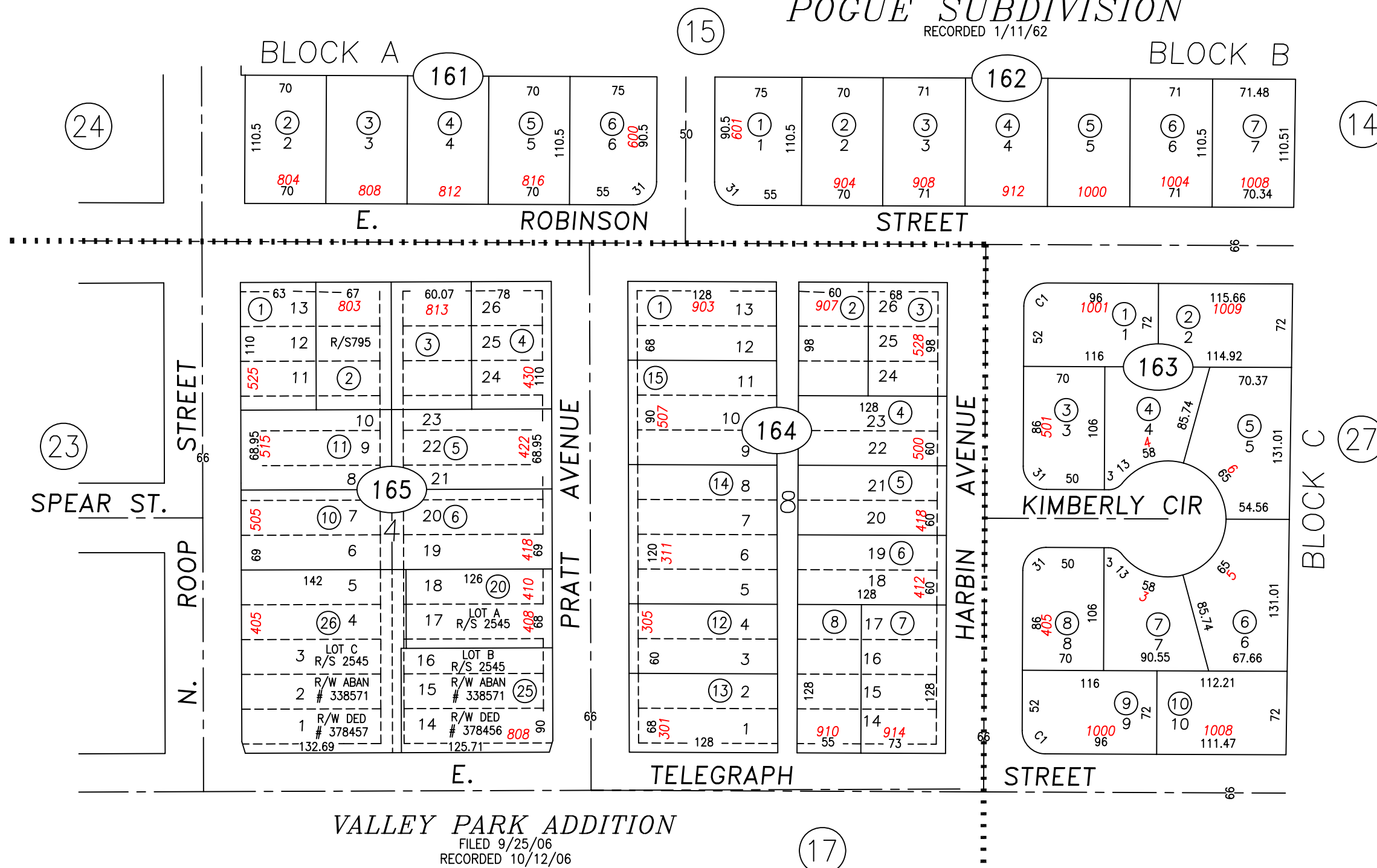


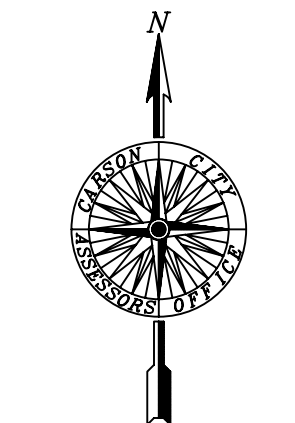
POGUE SUBDIVISION

RECORDED 1/11/62



VALLEY PARK ADDITION

FILED 9/25/06
RECORDED 10/12/06



SCALE: 1" = 100'
REVISED: 11/03/2011

PARCEL 004-165-24 & 23 ARE NOW 26 & 25: STANDARDIZED PAGE

NOTE:
SOME PARCELS DELINEATED HEREON MAY NOT BE PRESENTED IN TRUE SIZE, SHAPE, OR LOCATION DUE TO DISCREPANCIES BETWEEN LOT LINES.

CARSON CITY, NEVADA
THIS MAP IS PREPARED FOR THE USE OF THE CARSON CITY ASSESSOR FOR ASSESSMENT AND ILLUSTRATIVE PURPOSES ONLY. IT DOES NOT REPRESENT A SURVEY. NO LIABILITY IS ASSUMED AS TO THE SUFFICIENCY OR ACCURACY OF THE DATA DELINEATED HEREON. YOU CAN VIEW AND PRINT OUR MAPS AT NO CHARGE FROM OUR WEBSITE AT WWW.CARSON-CITY.NV.US