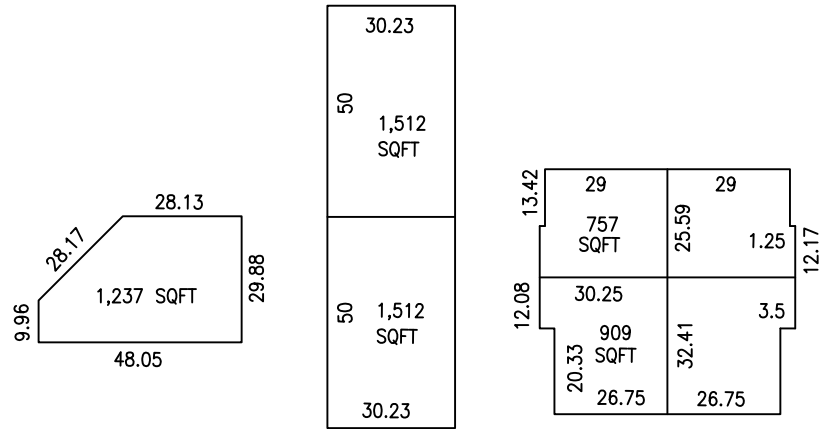


GOVERNOR'S SQUARE PLANNED UNIT DEVELOPMENT

RECORDED 10.06.2006
MAP 2623 DOC.# 359467
LLD #481277 12/13/17

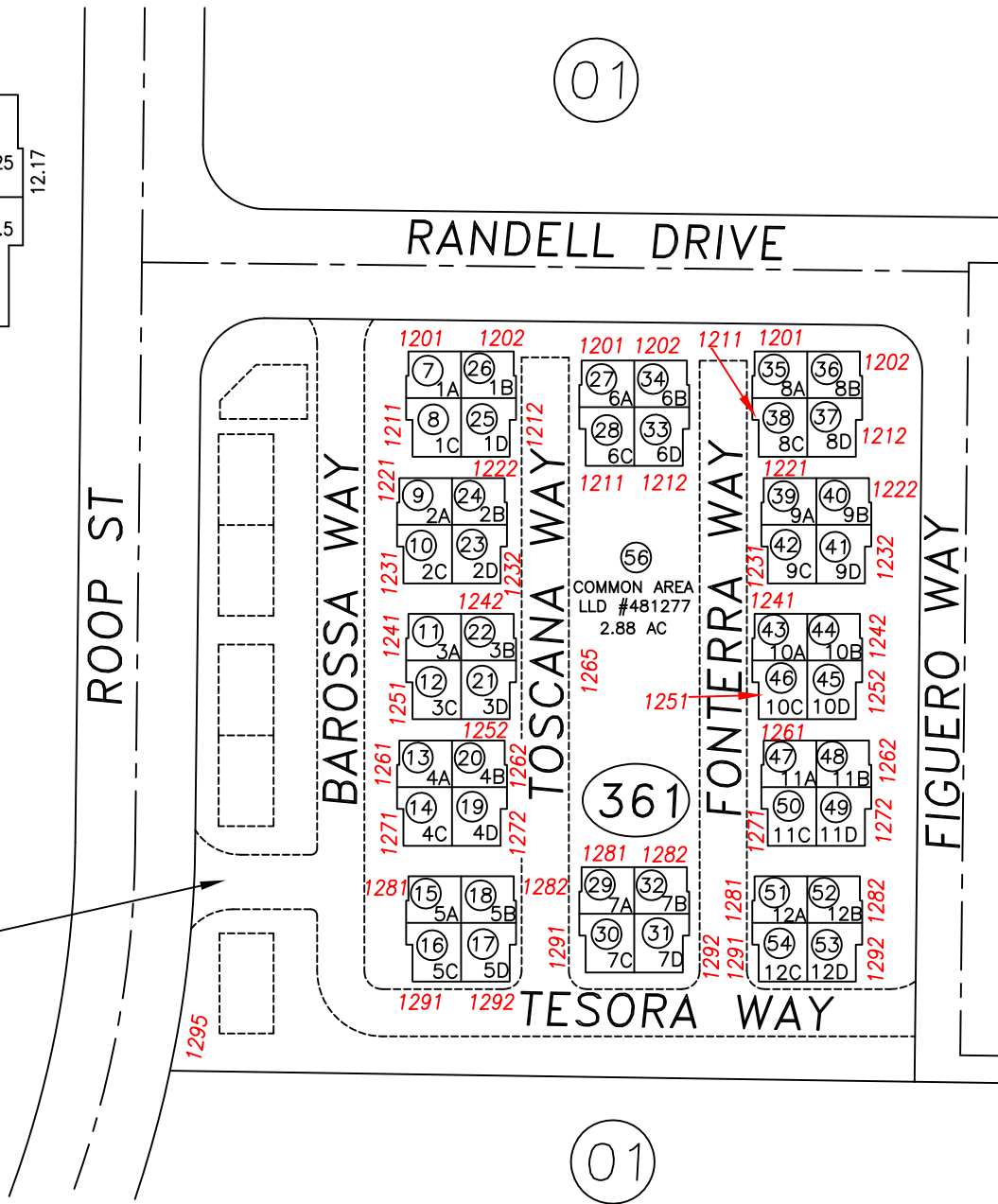
| PARCEL NO | SQFT |
|------------|------|
| 004-361-07 | 757 |
| 004-361-08 | 909 |
| 004-361-09 | 757 |
| 004-361-10 | 909 |
| 004-361-11 | 757 |
| 004-361-12 | 909 |
| 004-361-13 | 757 |
| 004-361-14 | 909 |
| 004-361-15 | 757 |
| 004-361-16 | 909 |
| 004-361-17 | 909 |
| 004-361-18 | 757 |
| 004-361-19 | 909 |
| 004-361-20 | 757 |
| 004-361-21 | 909 |
| 004-361-22 | 757 |
| 004-361-23 | 909 |
| 004-361-24 | 757 |
| 004-361-25 | 909 |
| 004-361-26 | 757 |
| 004-361-27 | 757 |
| 004-361-28 | 909 |
| 004-361-29 | 757 |
| 004-361-30 | 909 |
| 004-361-31 | 909 |
| 004-361-32 | 757 |
| 004-361-33 | 909 |
| 004-361-34 | 757 |
| 004-361-35 | 757 |
| 004-361-36 | 757 |
| 004-361-37 | 909 |
| 004-361-38 | 909 |
| 004-361-39 | 757 |
| 004-361-40 | 757 |
| 004-361-41 | 909 |
| 004-361-42 | 909 |
| 004-361-43 | 757 |
| 004-361-44 | 757 |
| 004-361-45 | 909 |
| 004-361-46 | 909 |
| 004-361-47 | 757 |
| 004-361-48 | 757 |
| 004-361-49 | 909 |
| 004-361-50 | 909 |
| 004-361-51 | 757 |
| 004-361-52 | 757 |
| 004-361-53 | 909 |
| 004-361-54 | 909 |



SCALE: 1"=50'

01

PRIVATE ACCESS
EASEMENT



01



SCALE: 1"=100'
REVISED: 1/17/2018

01