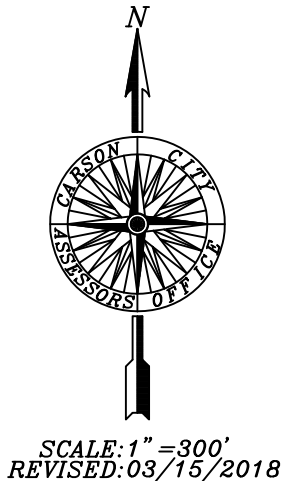
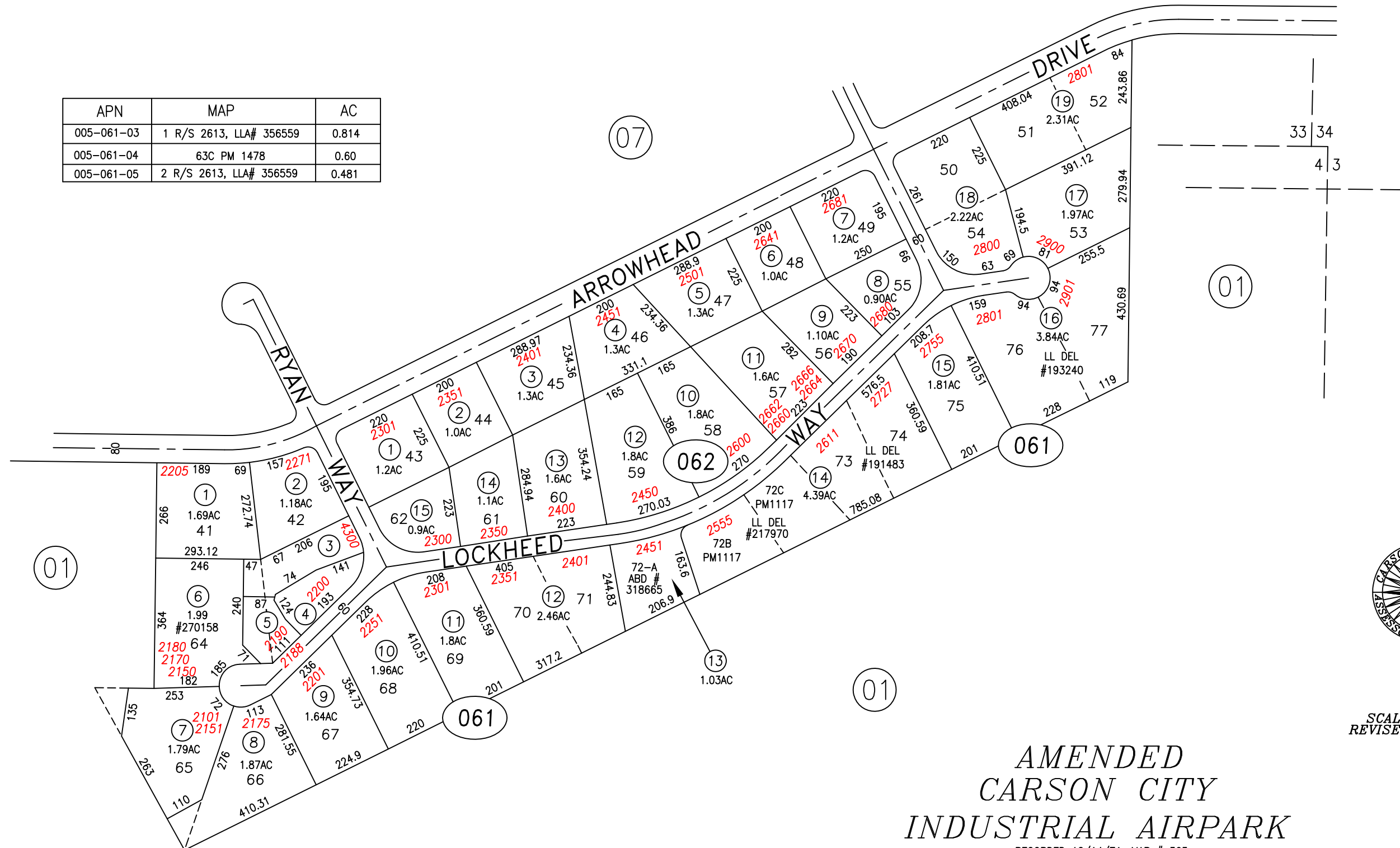


APN	MAP	AC
005-061-03	1 R/S 2613, LLA# 356559	0.814
005-061-04	63C PM 1478	0.60
005-061-05	2 R/S 2613, LLA# 356559	0.481



AMENDED
 CARSON CITY
 INDUSTRIAL AIRPARK
 RECORDED 12/14/71; MAP # 363

CORRECTED ACREAGE TO 008-061-06

CARSON CITY, NEVADA
 THIS MAP IS PREPARED FOR THE USE OF THE CARSON CITY
 ASSESSOR FOR ASSESSMENT AND ILLUSTRATIVE PURPOSES
 ONLY, IT DOES NOT REPRESENT A SURVEY. NO LIABILITY
 IS ASSUMED AS TO THE SUFFICIENCY OR ACCURACY OF THE
 DATA DELINEATED HEREON. YOU CAN VIEW AND PRINT OUR
 MAPS AT NO CHARGE FROM OUR WEBSITE AT: <http://ccapps.org/publicgis/>