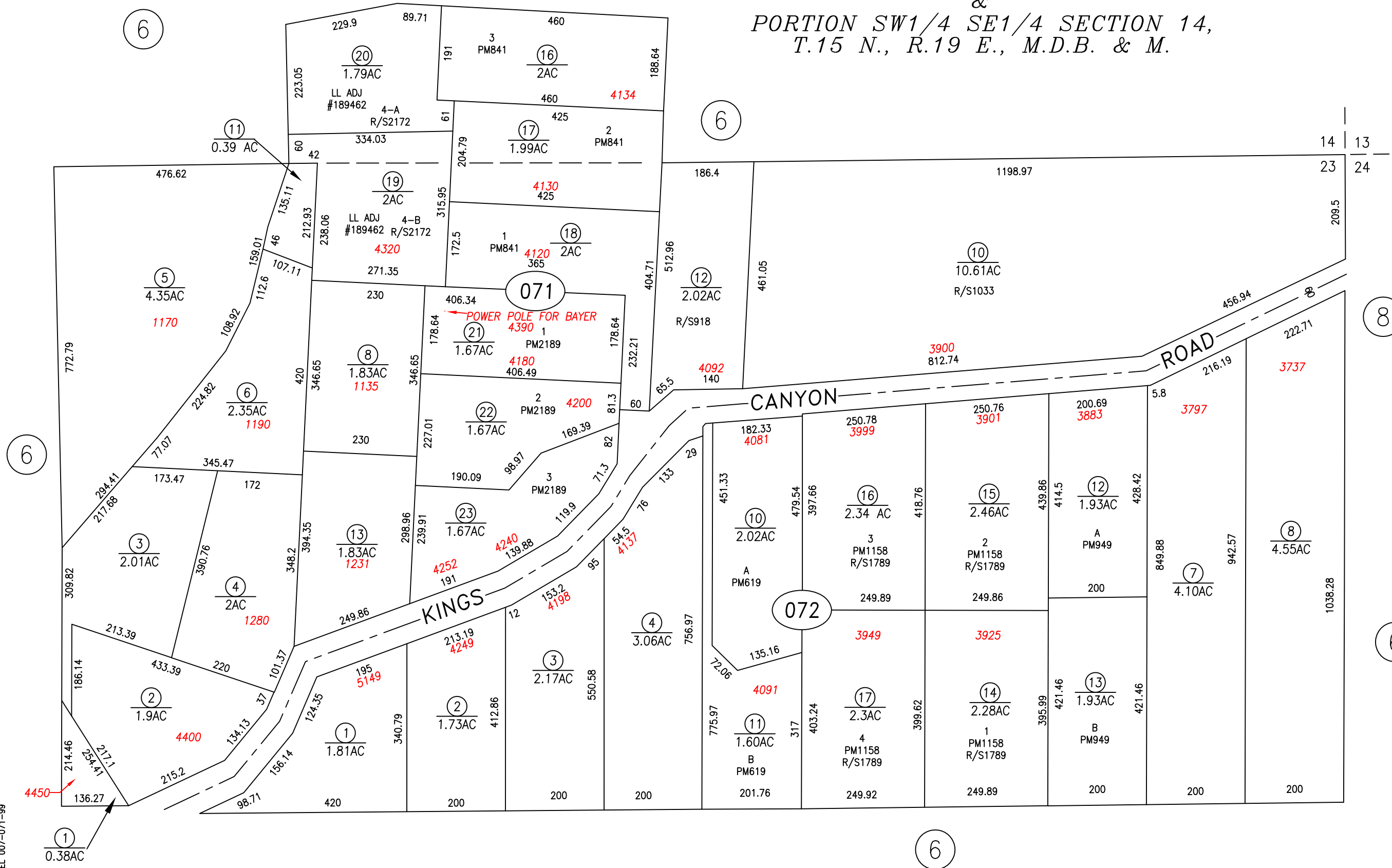


N1/2 NE 1/4 SECTION 23,
&
PORTION SW1/4 SE1/4 SECTION 14,
T.15 N., R.19 E., M.D.B. & M.



REMOVED LEASED PARCEL 007-071-99

CARSON CITY, NEVADA
THIS MAP IS PREPARED FOR THE USE OF THE CARSON CITY ASSESSOR FOR ASSESSMENT AND ILLUSTRATIVE PURPOSES ONLY, IT DOES NOT REPRESENT A SURVEY. NO LIABILITY IS ASSUMED AS TO THE SUFFICIENCY OR ACCURACY OF THE DATA DELINEATED HEREON. YOU CAN VIEW AND PRINT OUR MAPS AT NO CHARGE FROM OUR WEBSITE AT WWW.CARSON-CITY.NV.US

NOTE
SOME PARCELS DELINEATED HEREON MAY NOT BE PRESENTED IN TRUE SIZE, SHAPE, OR LOCATION DUE TO DISCREPANCIES BETWEEN LOT LINES.



SCALE: 1" = 200'
REVISED: 7/02/2008