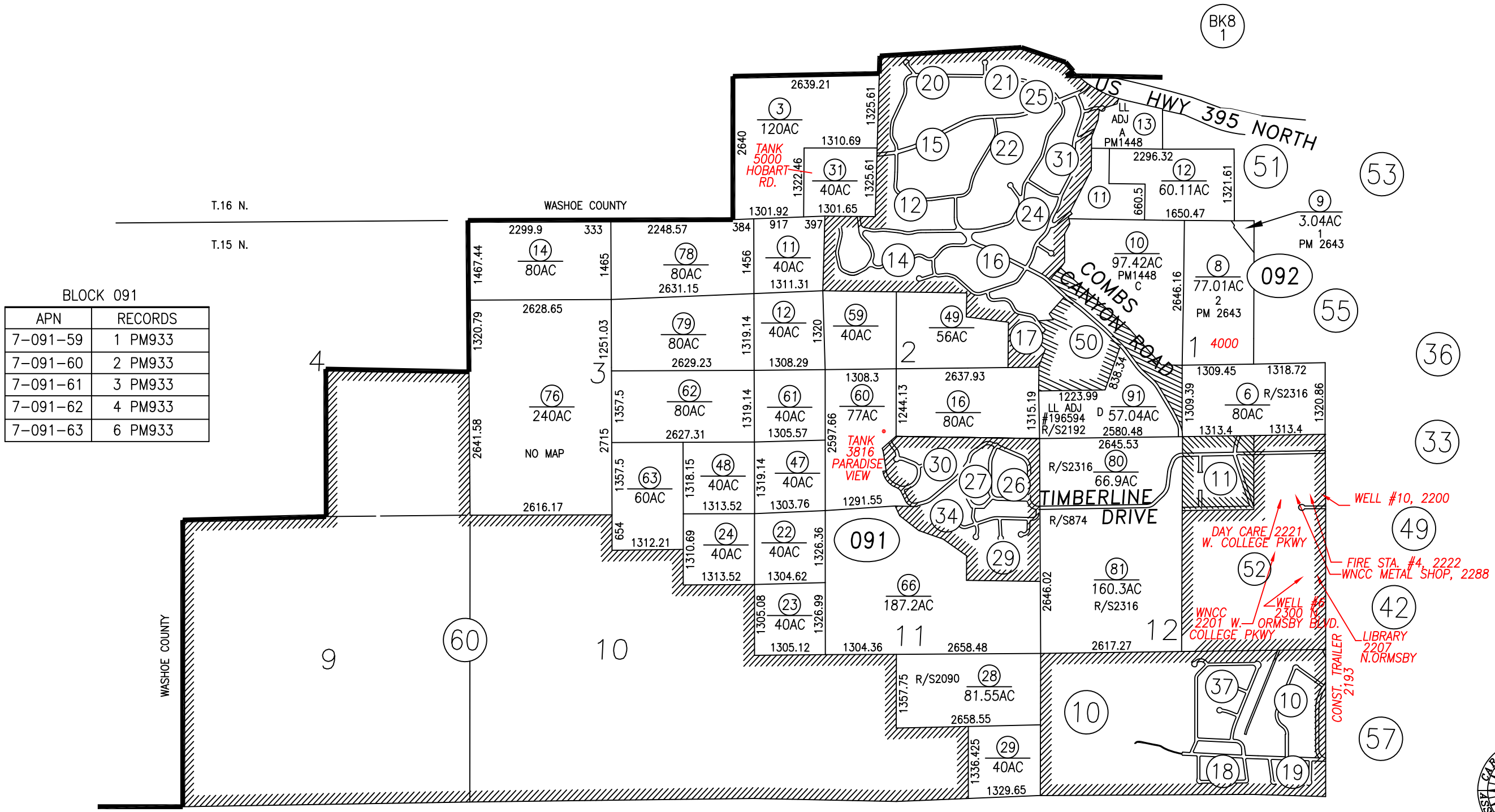


PORTION T.16 N., R.19 E. M.D.B. & M.
 &
 PORTION T.15 N., R.19 E. M.D.B. & M.

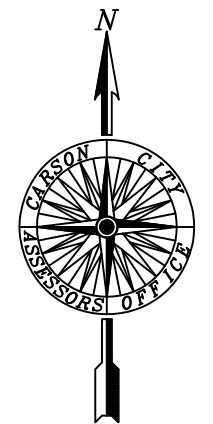
7-09



BLOCK 091

| APN | RECORDS |
|----------|---------|
| 7-091-59 | 1 PM933 |
| 7-091-60 | 2 PM933 |
| 7-091-61 | 3 PM933 |
| 7-091-62 | 4 PM933 |
| 7-091-63 | 6 PM933 |

COMBS CANYON BOOSTER PUMPS
 #1 - 3773
 #2 -
 #3 - 4203



SCALE: 1" = 2000'
 REVISED: 04/13/2017

PARCEL 007-092-07 IS NOW 007-502-01,02,03, & 04 PM#2909 #473796

NOTE
 SOME PARCELS DELINEATED HEREON MAY NOT BE PRESENTED IN TRUE SIZE, SHAPE, OR LOCATION DUE TO DISCREPANCIES BETWEEN LOT LINES.

CARSON CITY, NEVADA
 THIS MAP IS PREPARED FOR THE USE OF THE CARSON CITY ASSESSOR FOR ASSESSMENT AND ILLUSTRATIVE PURPOSES ONLY, IT DOES NOT REPRESENT A SURVEY. NO LIABILITY IS ASSUMED AS TO THE SUFFICIENCY OR ACCURACY OF THE DATA DELINEATED HEREON. YOU CAN VIEW AND PRINT OUR MAPS AT NO CHARGE FROM OUR WEBSITE AT: <http://ccapps.org/publicgis/>