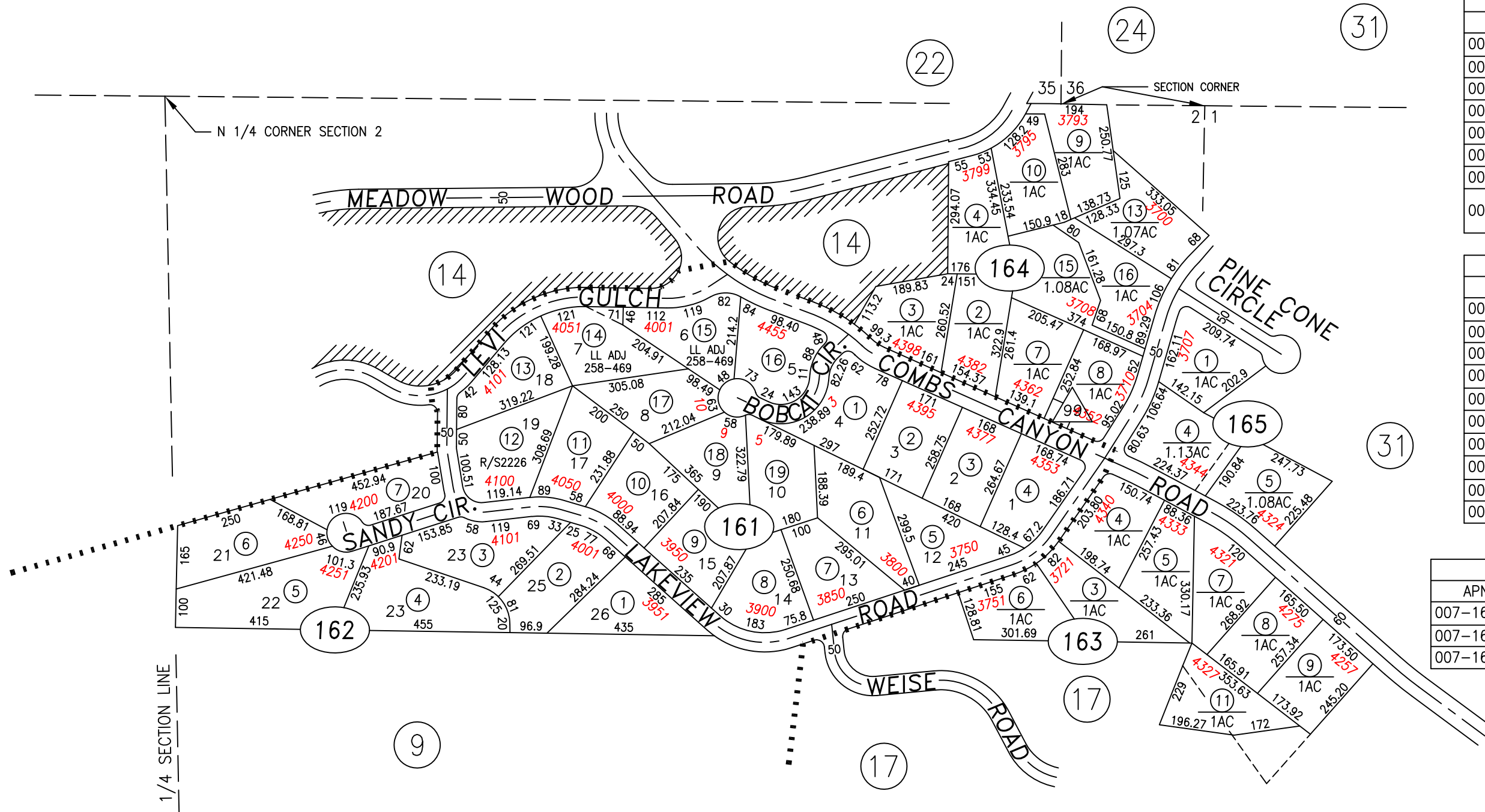


PORTION NE1/4 SECTION 2  
T.15 N., R.19 E., M.D.B. & M.



BLOCK 163	
APN	RECORD
007-163-03	3 PM473
007-163-04	1 PM473
007-163-05	2 PM473
007-163-06	4 PM473
007-163-07	A PM708
007-163-08	B PM708
007-163-09	C PM708
007-163-11	D PM708
	R/S2535

BLOCK 164	
APN	RECORD
007-164-02	C PM737
007-164-03	B PM737
007-164-04	A PM737
007-164-07	2 PM775
007-164-08	1 PM775
007-164-09	B PM804
007-164-10	A PM804
007-164-13	6 PM820
007-164-15	LLA #86832
007-164-16	LLA #86832

BLOCK 165		
APN	LOT	RECORD
007-165-01	54	PM843
007-165-04	53	R/S1792
007-165-05	52	R/S1792

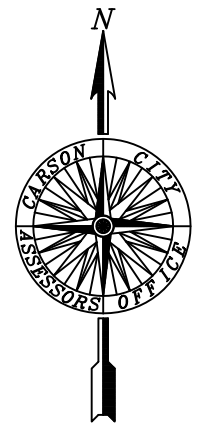
CORRECTED NOTES FOR PARCELS 007-165-04 & 05

NOTE  
SOME PARCELS DELINEATED HEREON MAY NOT  
BE PRESENTED IN TRUE SIZE, SHAPE, OR LOCATION  
DUE TO DISCREPANCIES BETWEEN LOT LINES.

CARSON CITY, NEVADA  
THIS MAP IS PREPARED FOR THE USE OF THE CARSON CITY  
ASSESSOR FOR ASSESSMENT AND ILLUSTRATIVE PURPOSES  
ONLY. IT DOES NOT REPRESENT A SURVEY. NO LIABILITY  
IS ASSUMED AS TO THE SUFFICIENCY OR ACCURACY OF THE  
DATA DELINEATED HEREON. YOU CAN VIEW AND PRINT OUR  
MAPS AT NO CHARGE FROM OUR WEBSITE AT: <http://ccapps.org/publicgis/>

▲ BUILDING ON LEASED LAND

LAKEVIEW WOODS  
UNIT NO. 2  
RECORDED 9/3/74



SCALE: 1" = 300'  
REVISED: 03/06/2019