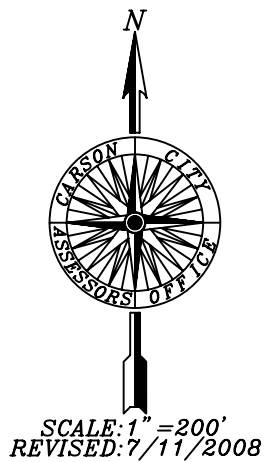
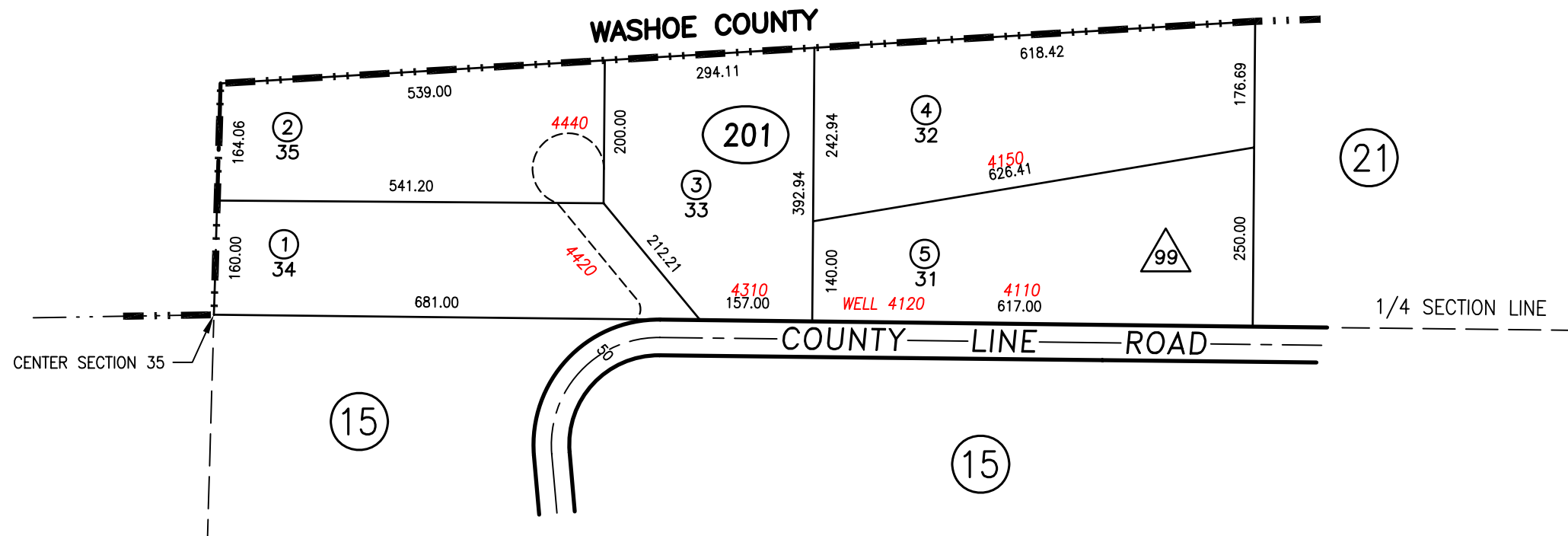


PORTION S1/2 NE1/4 SECTION 35
T.16 N., R.19 E., M.D.B. & M.



LAKEVIEW KNOLLS NO. 3
RECORDED 8/87 (9/29/75 IN WASHOE COUNTY)

STANDARDIZED PAGE
CARSON CITY, NEVADA
THIS MAP IS PREPARED FOR THE USE OF THE CARSON CITY ASSESSOR FOR ASSESSMENT AND ILLUSTRATIVE PURPOSES ONLY. IT DOES NOT REPRESENT A SURVEY. NO LIABILITY IS ASSUMED AS TO THE SUFFICIENCY OR ACCURACY OF THE DATA DELINEATED HEREON. YOU CAN VIEW AND PRINT OUR MAPS AT NO CHARGE FROM OUR WEBSITE AT WWW.CARSON-CITY.NV.US