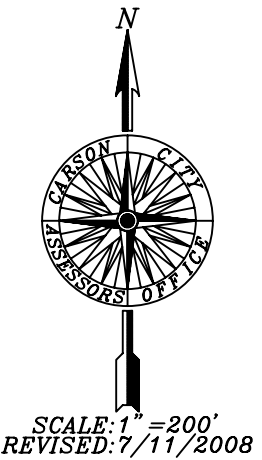
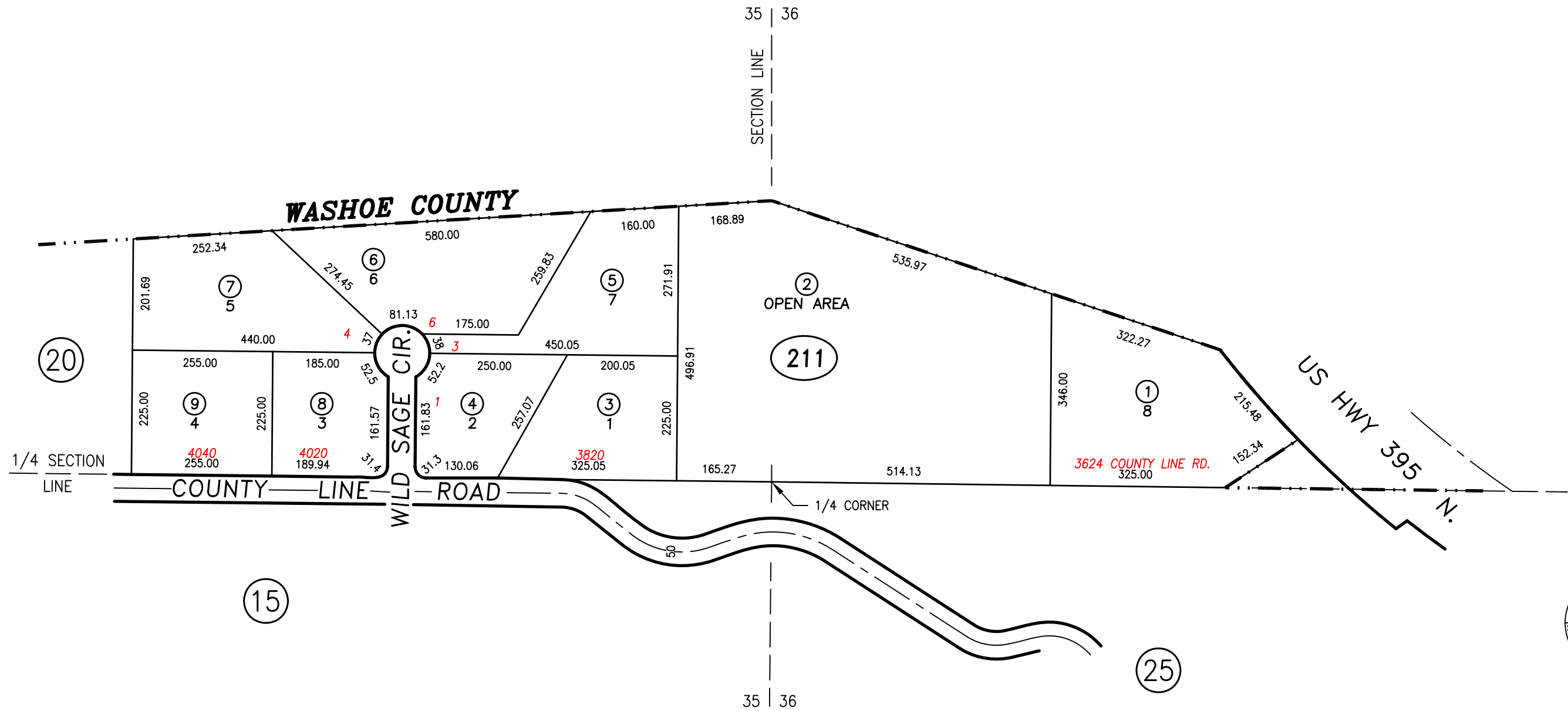


PORTION SE1/4 NE1/4 SECTION 35
T.16 N., R.19 E., M.D.B. & M.

PORTION SW1/4 NW1/4 SECTION 36
T.16 N., R.19 E., M.D.B. & M.

7-21



LAKEVIEW KNOLLS NO. 4
RECORDED 8/87 (4/27/76 IN WASHOE COUNTY)
AMENDED LOTS 6 & 7 - 8/87 (1/4/77 IN WASHOE COUNTY)

STANDARDIZED PAGE CARSON CITY, NEVADA
THIS MAP IS PREPARED FOR THE USE OF THE CARSON CITY ASSESSOR FOR ASSESSMENT AND ILLUSTRATIVE PURPOSES ONLY, IT DOES NOT REPRESENT A SURVEY. NO LIABILITY IS ASSUMED AS TO THE SUFFICIENCY OR ACCURACY OF THE DATA DELINEATED HEREON. YOU CAN VIEW AND PRINT OUR MAPS AT NO CHARGE FROM OUR WEBSITE AT WWW.CARSON-CITY.NV.US