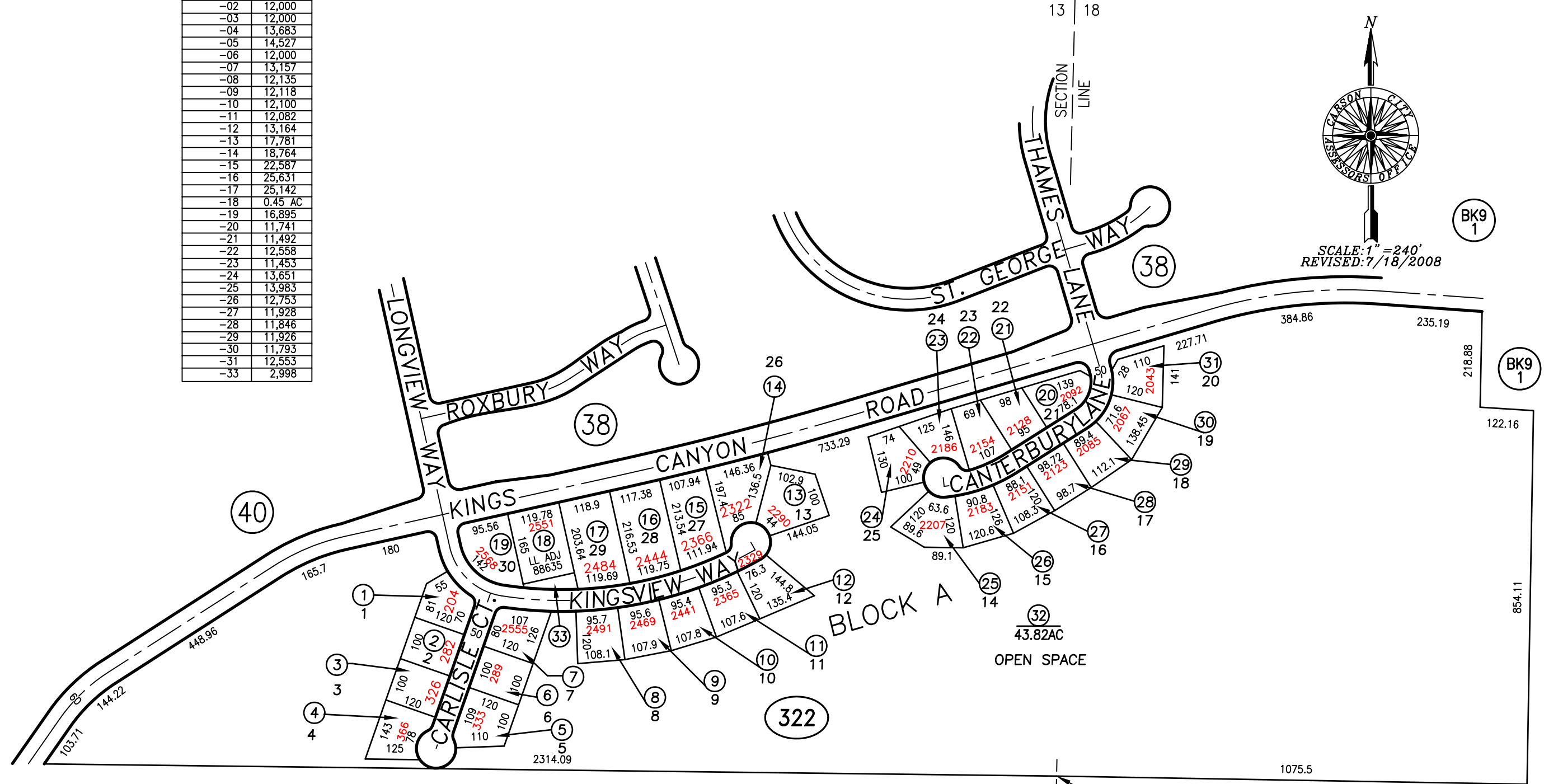


PORTION N1/2 SE1/4 SECTION 13  
T.15 N., R.19 E., M.D.B. & M.

PORTION NW1/4 SW1/4 SECTION 18 7-32  
T.15 N., R.20 E., M.D.B. & M.

APN	SQ FT
7-322-01	12,116
-02	12,000
-03	12,000
-04	13,683
-05	14,527
-06	12,000
-07	13,157
-08	12,135
-09	12,118
-10	12,100
-11	12,082
-12	13,164
-13	17,781
-14	18,764
-15	22,587
-16	25,631
-17	25,142
-18	0.45 AC
-19	16,895
-20	11,741
-21	11,492
-22	12,558
-23	11,453
-24	13,651
-25	13,983
-26	12,753
-27	11,928
-28	11,846
-29	11,926
-30	11,793
-31	12,553
-33	2,998



LONG RANCH ESTATES  
PHASE 1B  
A PLANNED UNIT DEVELOPMENT

RECORDED 8/17/94  
STREETS DEDICATED  
1/26/98, #212888

STANDARDIZED PAGE. CARSON CITY, NEVADA  
THIS MAP IS PREPARED FOR THE USE OF THE CARSON CITY ASSESSOR FOR ASSESSMENT AND ILLUSTRATIVE PURPOSES ONLY, IT DOES NOT REPRESENT A SURVEY. NO LIABILITY IS ASSUMED AS TO THE SUFFICIENCY OR ACCURACY OF THE DATA DELINEATED HEREON. YOU CAN VIEW AND PRINT OUR MAPS AT NO CHARGE FROM OUR WEBSITE AT WWW.CARSON-CITY.NV.US