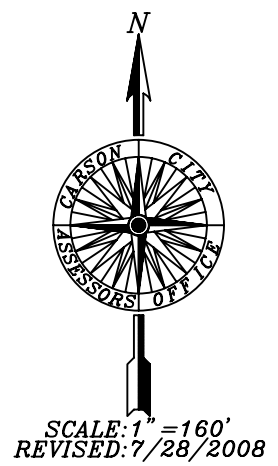
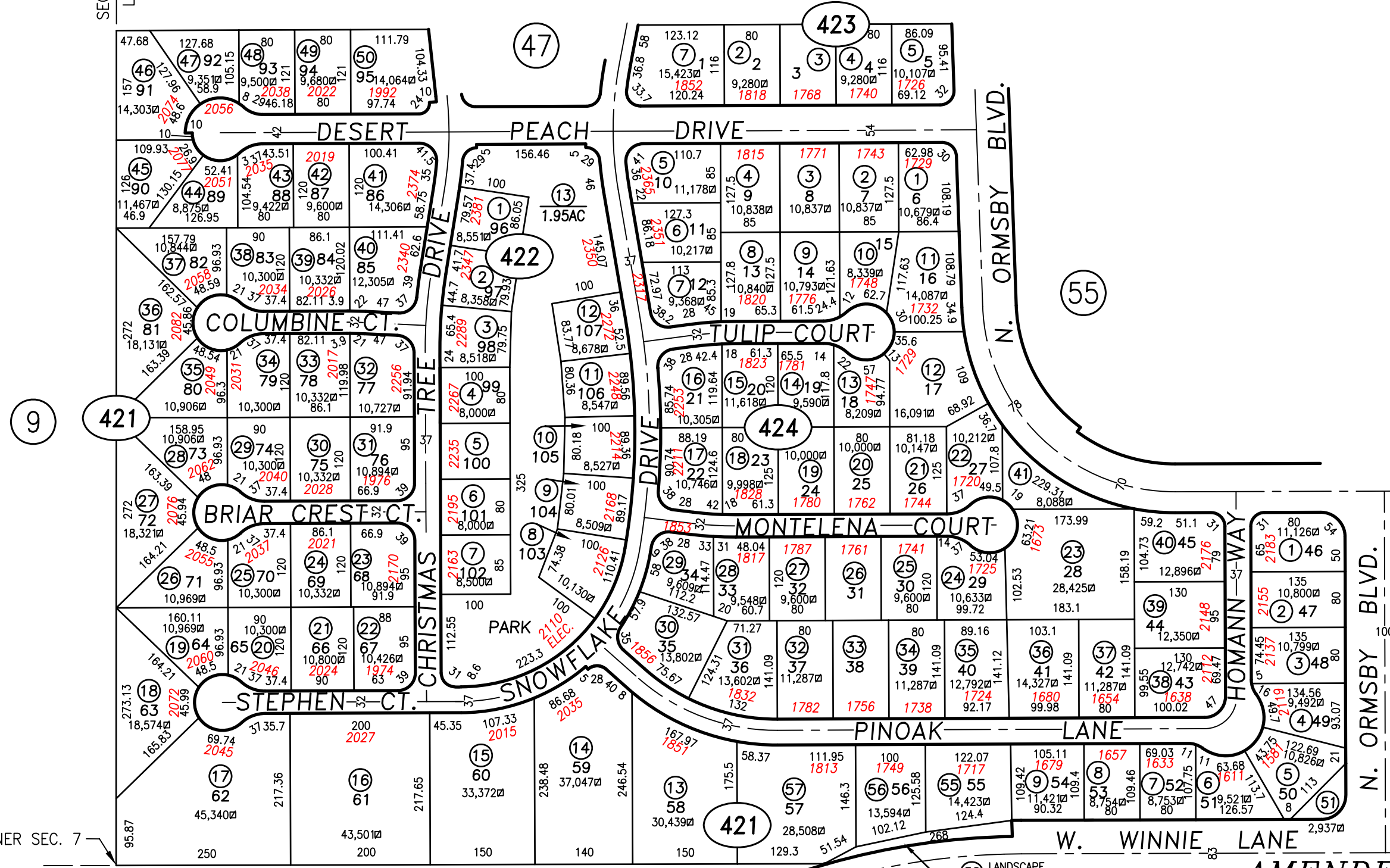


SECTION LINE



W1/4 CORNER SEC. 7

(58) LANDSCAPE & P.U.E.
3,962sq

NOTE:
PARCEL CREATED AS A
"MINOR AMENDMENT" TO
SILVER OAK, PHASE 2,
PER CCMC, SECTION
17.69.150

(57) **AMENDED SILVER OAK PHASE 2**
A PLANNED UNIT DEVELOPMENT

STANDARDIZED PAGE.
CARSON CITY, NEVADA
THIS MAP IS PREPARED FOR THE USE OF THE CARSON CITY ASSESSOR FOR ASSESSMENT AND ILLUSTRATIVE PURPOSES ONLY, IT DOES NOT REPRESENT A SURVEY. NO LIABILITY IS ASSUMED AS TO THE SUFFICIENCY OR ACCURACY OF THE DATA DELINEATED HEREON. YOU CAN VIEW AND PRINT OUR MAPS AT NO CHARGE FROM OUR WEBSITE AT WWW.CARSON-CITY.NV.US

RECORDED 1/9/95
AMENDED 6/26/96
STREETS DEDICATED
1/26/98, #212846