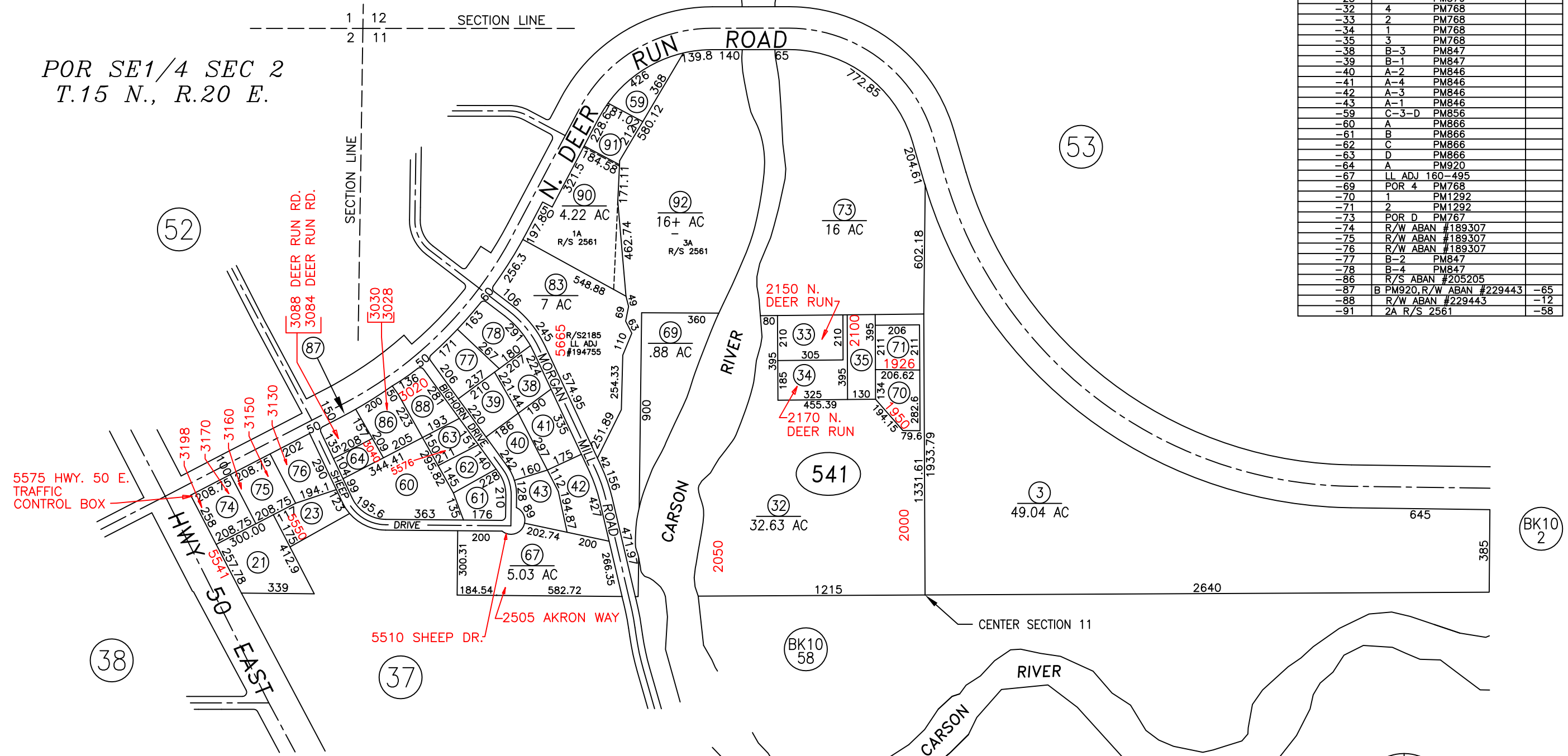


PORTION E1/2 SECTION 11  
T.15 N., R.20 E., M.D.B. & M.

POR SE1/4 SEC 2  
T.15 N., R.20 E.

APN	REFERENCE	PRIOR
8-541-21	MAP 579A	
-23	PM579	
-32	4 PM768	
-33	2 PM768	
-34	1 PM768	
-35	3 PM768	
-38	B-3 PM847	
-39	B-1 PM847	
-40	A-2 PM846	
-41	A-4 PM846	
-42	A-3 PM846	
-43	A-1 PM846	
-59	C-3-D PM856	
-60	A PM866	
-61	B PM866	
-62	C PM866	
-63	D PM866	
-64	A PM920	
-67	LL ADJ 160-495	
-69	POR 4 PM768	
-70	1 PM1292	
-71	2 PM1292	
-73	POR D PM767	
-74	R/W ABAN #189307	
-75	R/W ABAN #189307	
-76	R/W ABAN #189307	
-77	B-2 PM847	
-78	B-4 PM847	
-86	R/S ABAN #205205	
-87	B PM920, R/W ABAN #229443	-65
-88	R/W ABAN #229443	-12
-91	2A R/S 2561	-58



UPDATED PARCEL 008-541-67

NOTE  
SOME PARCELS DELINEATED HEREON MAY NOT BE PRESENTED IN TRUE SIZE, SHAPE, OR LOCATION DUE TO DISCREPANCIES BETWEEN LOT LINES.

CARSON CITY, NEVADA  
THIS MAP IS PREPARED FOR THE USE OF THE CARSON CITY ASSESSOR FOR ASSESSMENT AND ILLUSTRATIVE PURPOSES ONLY, IT DOES NOT REPRESENT A SURVEY. NO LIABILITY IS ASSUMED AS TO THE SUFFICIENCY OR ACCURACY OF THE DATA DELINEATED HEREON. YOU CAN VIEW AND PRINT OUR MAPS AT NO CHARGE FROM OUR WEBSITE AT: <http://ccapps.org/publicgis/>

