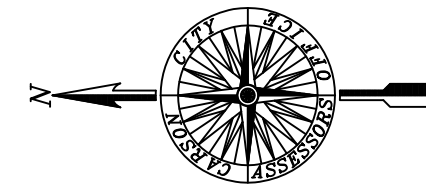


APN	MAP
9-311-29	4D PM1295
-30 4C	PM1295
-31 4B	PM1295
-36 1	PM1395
-37 2	PM1395
-38 1	PM1396
-39 2	PM1396
-45 4	R/S2032
-46 POR 1	R/S2032
-58 1	PM2589
-59 2	PM2589

*APN 9-311-04 CHANGE ADDRESS IF OPPORTUNITY COMES. NUMBER IS TOO HIGH

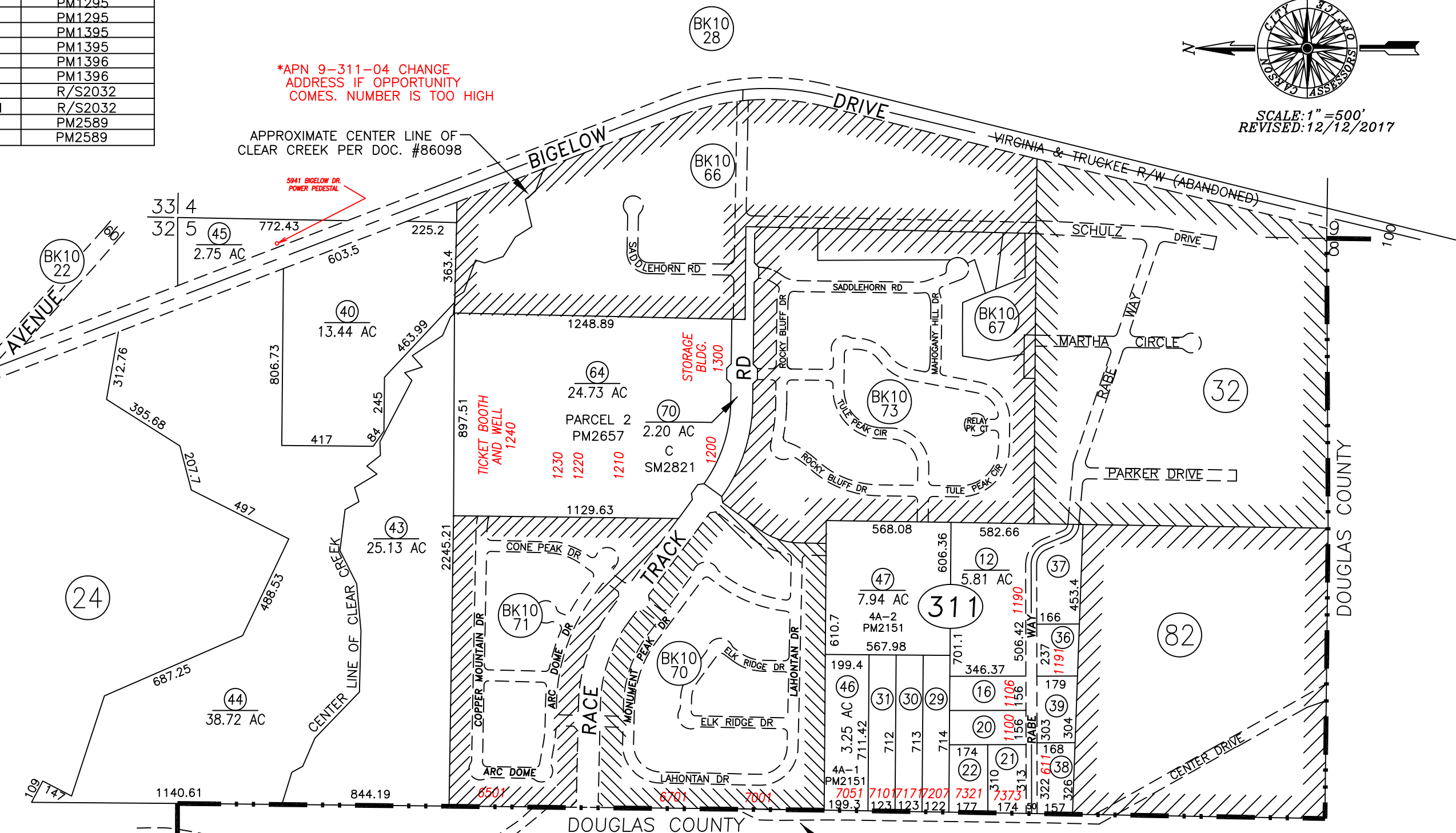
APPROXIMATE CENTER LINE OF CLEAR CREEK PER DOC. #86098



009-311-69 MOVED TO BK 10-70 AND 009-311-71 MOVED TO BK 10-71

NOTE
SOME PARCELS DELINEATED HEREON MAY NOT BE PRESENTED IN TRUE SIZE, SHAPE, OR LOCATION DUE TO DISCREPANCIES BETWEEN LOT LINES.

CARSON CITY, NEVADA
THIS MAP IS PREPARED FOR THE USE OF THE CARSON CITY ASSESSOR FOR ASSESSMENT AND ILLUSTRATIVE PURPOSES ONLY. IT DOES NOT REPRESENT A SURVEY. NO LIABILITY IS ASSUMED AS TO THE SUFFICIENCY OR ACCURACY OF THE DATA DELINEATED HEREON. YOU CAN VIEW AND PRINT OUR MAPS AT NO CHARGE FROM OUR WEBSITE AT: <http://ccapps.org/publicgis/>



APPROXIMATE LOCATION OF CENTER DRIVE PORTIONS LYING WITHIN DOUGLAS CO. MAINTAINED BY CARSON CITY PER BOARD OF SUPERVISORS RESOLUTION NO. 1971-R-5 MARCH 5, 1971.